

**NOTES**

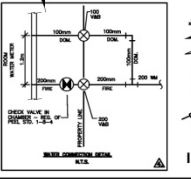
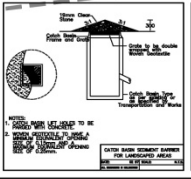
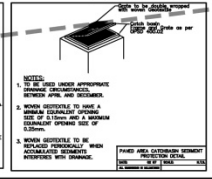
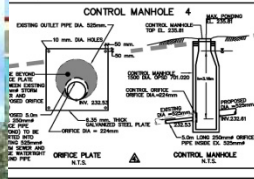
1. THE GRADING SYSTEM ON THIS PLAN IS BASED ON THE PROPOSED FINISHED GRADE SURFACE ELEVATIONS SHOWN ON THIS PLAN.
2. ALL ELEVATIONS ARE IN METERS UNLESS OTHERWISE NOTED.
3. THE PROPOSED FINISHED GRADE SURFACE ELEVATIONS SHOWN ON THIS PLAN ARE BASED ON THE BENCHMARK ELEVATION OF 233.600 METER.
4. THE PROPOSED FINISHED GRADE SURFACE ELEVATIONS SHOWN ON THIS PLAN ARE BASED ON THE BENCHMARK ELEVATION OF 233.600 METER.
5. THE PROPOSED FINISHED GRADE SURFACE ELEVATIONS SHOWN ON THIS PLAN ARE BASED ON THE BENCHMARK ELEVATION OF 233.600 METER.
6. THE PROPOSED FINISHED GRADE SURFACE ELEVATIONS SHOWN ON THIS PLAN ARE BASED ON THE BENCHMARK ELEVATION OF 233.600 METER.
7. THE PROPOSED FINISHED GRADE SURFACE ELEVATIONS SHOWN ON THIS PLAN ARE BASED ON THE BENCHMARK ELEVATION OF 233.600 METER.
8. THE PROPOSED FINISHED GRADE SURFACE ELEVATIONS SHOWN ON THIS PLAN ARE BASED ON THE BENCHMARK ELEVATION OF 233.600 METER.
9. THE PROPOSED FINISHED GRADE SURFACE ELEVATIONS SHOWN ON THIS PLAN ARE BASED ON THE BENCHMARK ELEVATION OF 233.600 METER.
10. THE PROPOSED FINISHED GRADE SURFACE ELEVATIONS SHOWN ON THIS PLAN ARE BASED ON THE BENCHMARK ELEVATION OF 233.600 METER.
11. THE PROPOSED FINISHED GRADE SURFACE ELEVATIONS SHOWN ON THIS PLAN ARE BASED ON THE BENCHMARK ELEVATION OF 233.600 METER.
12. THE PROPOSED FINISHED GRADE SURFACE ELEVATIONS SHOWN ON THIS PLAN ARE BASED ON THE BENCHMARK ELEVATION OF 233.600 METER.
13. THE PROPOSED FINISHED GRADE SURFACE ELEVATIONS SHOWN ON THIS PLAN ARE BASED ON THE BENCHMARK ELEVATION OF 233.600 METER.
14. THE PROPOSED FINISHED GRADE SURFACE ELEVATIONS SHOWN ON THIS PLAN ARE BASED ON THE BENCHMARK ELEVATION OF 233.600 METER.
15. THE PROPOSED FINISHED GRADE SURFACE ELEVATIONS SHOWN ON THIS PLAN ARE BASED ON THE BENCHMARK ELEVATION OF 233.600 METER.
16. THE PROPOSED FINISHED GRADE SURFACE ELEVATIONS SHOWN ON THIS PLAN ARE BASED ON THE BENCHMARK ELEVATION OF 233.600 METER.
17. THE PROPOSED FINISHED GRADE SURFACE ELEVATIONS SHOWN ON THIS PLAN ARE BASED ON THE BENCHMARK ELEVATION OF 233.600 METER.
18. THE PROPOSED FINISHED GRADE SURFACE ELEVATIONS SHOWN ON THIS PLAN ARE BASED ON THE BENCHMARK ELEVATION OF 233.600 METER.

**BUILDING STATISTICS**

GROUND FLOOR TO THIRD FLOOR G.F.A.	= 5,080.5 sq.m.
PARKING LEVEL G.F.A.	= 3,084.2 sq.m.
TOTAL G.F.A. (47 UNITS)	= 8,044.7 sq.m.

**BENCHMARK**

ELEVATIONS SHOWN HEREON ARE GEODETIC AND ARE RELATED TO CITY OF BRAMPTON BENCHMARK NO. 20-218 LOCATED ON THE WEST WALL OF GROUP C-14 ON THE NORTHWEST CORNER OF THE CORPUS DE PAZI AND PROTESTANT LAKES PARKWAY. TABLE T-101 (4th EDITION) OF THE SURVEYORS' CONVENTION AND REGULATIONS ABOVE GRADE, HAVING AN ELEVATION OF 233.600 METERS.



**LEGEND**

- EXISTING ELEVATION
- PROPOSED ELEVATION
- PROPOSED DRAINAGE DIRECTION AND PERCENT SLOPE
- EXISTING DRAINAGE DIRECTION
- FFE FIRST FLOOR ELEVATION
- FGE FINISHED GARAGE ELEVATION
- FGE FINISHED BASEMENT ELEVATION
- STORM WATER MANAGEMENT PONDING ELEVATION
- ROOF DRAIN LOCATION AND NUMBER OF WEIRS PER DRAIN
- TOP OF WALL ELEVATION
- BOTTOM OF WALL ELEVATION
- 3:1 SLOPE MAXIMUM
- EXT. AREA
- INT. AREA

**NOTES**

1. MANHOLE TO BE USED AS APPROVED BY THE LOCAL AUTHORITY.
2. MANHOLE TO BE USED AS APPROVED BY THE LOCAL AUTHORITY.
3. MANHOLE TO BE USED AS APPROVED BY THE LOCAL AUTHORITY.

**NOTES**

1. MANHOLE TO BE USED AS APPROVED BY THE LOCAL AUTHORITY.
2. MANHOLE TO BE USED AS APPROVED BY THE LOCAL AUTHORITY.
3. MANHOLE TO BE USED AS APPROVED BY THE LOCAL AUTHORITY.

**NOTES**

1. MANHOLE TO BE USED AS APPROVED BY THE LOCAL AUTHORITY.
2. MANHOLE TO BE USED AS APPROVED BY THE LOCAL AUTHORITY.
3. MANHOLE TO BE USED AS APPROVED BY THE LOCAL AUTHORITY.

**NOTES**

1. MANHOLE TO BE USED AS APPROVED BY THE LOCAL AUTHORITY.
2. MANHOLE TO BE USED AS APPROVED BY THE LOCAL AUTHORITY.
3. MANHOLE TO BE USED AS APPROVED BY THE LOCAL AUTHORITY.

**ISSUED FOR CONSTRUCTION**

2012241 ONTARIO L

60 Sunny Meadow Blvd (at Peter Robertson, Ontario)

**SITE SPECIFIC GRADING PLAN**



# SUNNY MEADOW MEDICAL CENTRE

BRAMPTON, ON

